



## Hinged Door



Single Door



Double Door

# PRODUCT CATALOG

## Sliding Door



Light Sliding Door



Industrial Sliding Door Double leaves



Industrial Sliding Door Single Leaf

## Swing Door



Single Leaf



Double Leaves

## Office Door



Single Leaf



Double Leaves

# TABLE OF CONTENT

## **ISO-THERMAL INSULATED DOORS**

Hinged doors.....	1
Overlap & flush hinged doors.....	2
Sliding doors.....	11
Light sliding doors.....	12
Industrial sliding doors .....	16

## **SEMI-INSULATED SERVICE DOORS**

Swing doors.....	24
Office doors.....	29

## **CLEAN ROOM DOORS**

Clean room doors.....	34
-----------------------	----

# ISO-THERMAL INSULATED DOORS

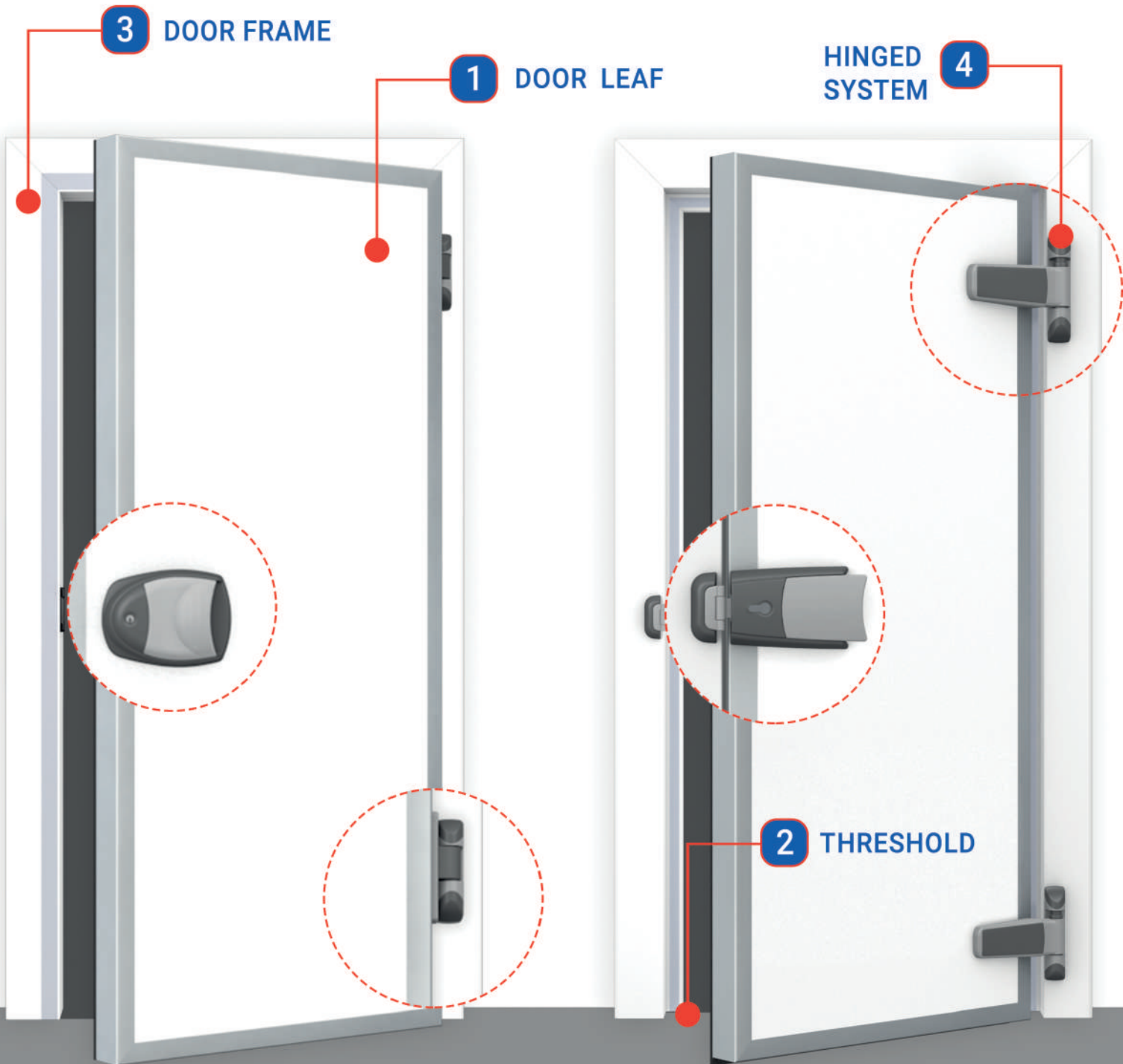
## HINGED DOORS



# HINGED DOORS

## Overlap & Flush

Single & Double Leaves

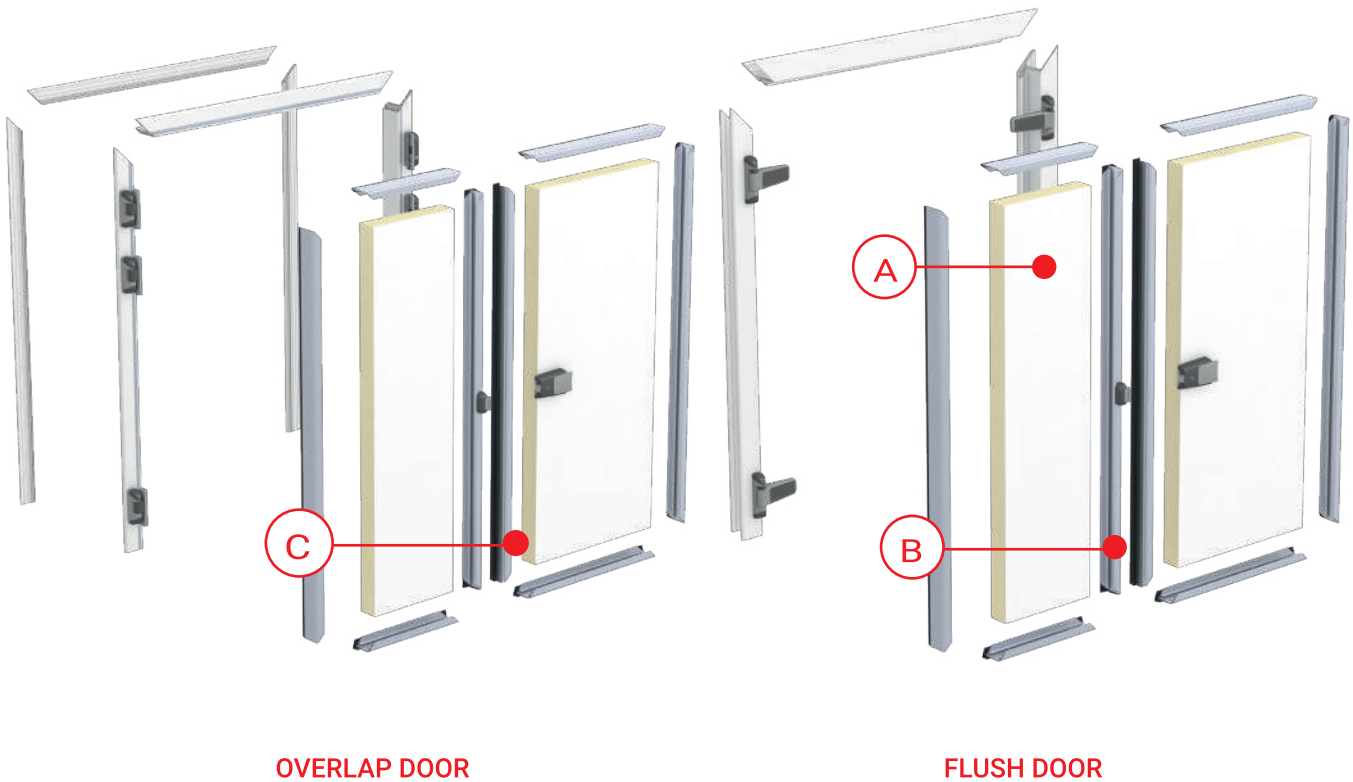




# Hinged Door

## Modular dimensions

- WIDTH up to 1500 mm for single-leaf door.
- WIDTH up to 3000 mm for double-leaf door.
- HEIGHT up to 3000 mm for both single and double leaf door.
- Thickness 70 mm up to 150 mm.



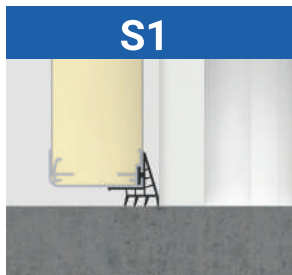
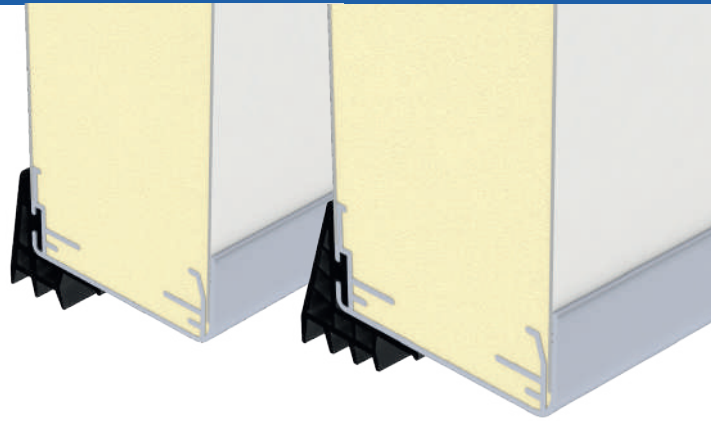
## 1-Door Leaf

- A- Cladding both sides of two pre-painted hot dip-galvanized steel sheets thickness 0.50mm RAL 9002 (Standard), thicker sheets available (on request) surrounded by an anodized aluminum profile 70,100,120 and 150mm, Injected with Polyurethane rigid foam (PUR) density of 40 Kg/ m3 ( $\pm 2$  kg).
- B- Along the edge of the anodized aluminum profile insert a special EPDM rubber gasket double density in order to avoid leakage.
- C- Special 3 or 4 lines EPDM rubber gaskets are fixed at the bottom of the door leaf.

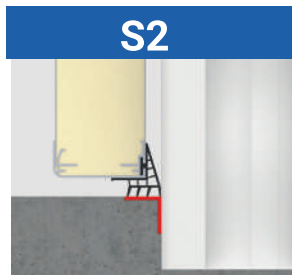
# Hinged Door

## 2-Threshold

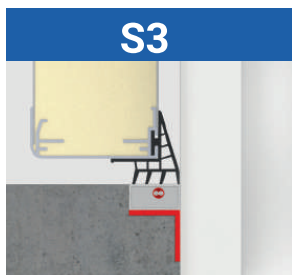
Four types of thresholds are available depending on door application and temperature of the room.



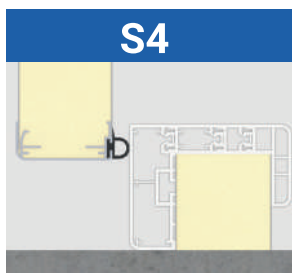
frame is only 3 parts without a threshold connected to it for positive and negative temperature.



frame is only 3 parts and a 50x50 mm pre-painted steel angle is connected to the frame at the bottom and recessed into the concrete floor.



frame is only 3 parts, A metal tube Angle of 40 x 40 mm joined with another stainless-steel tube (20 x 40 mm) Both are connected to the frame at the bottom and recessed into the concrete floor.



frame is 4 parts of P.V.C consisting of (2 jambs + 2 transoms) for both positive and negative temperature.

# Hinged Door

## 3-Door Frame

### Overlap Doors

1- Extruded P.V.C profile L shape for 100 mm panel thickness reinforced internally by steel, thermo-welded at (45o).

2- For thicker panels another frame connecting type is provided and comes in 3 parts:

- a- Outside part/ fixed size - 2 types - one for positive and the other
- b- for negative temperature.

Side part/ in two sizes 30 ,20, and 100 mm to be connected to

c- the outside part in order to reach the right panel thickness.

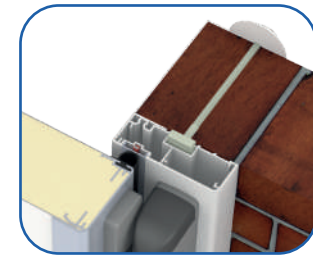
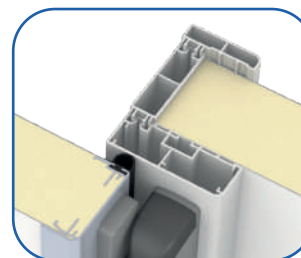
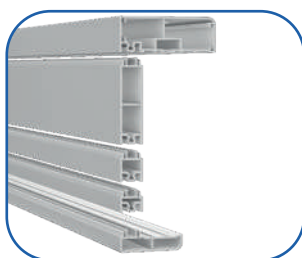
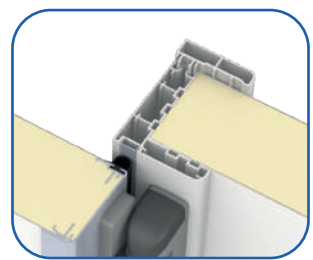
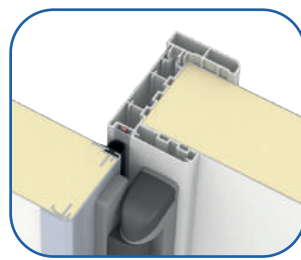
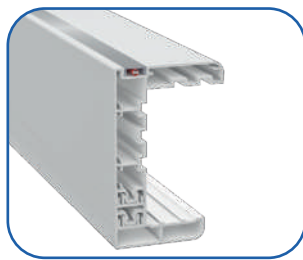
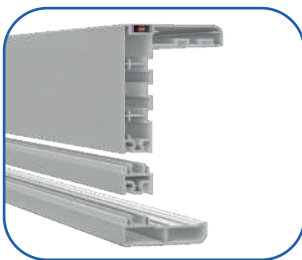
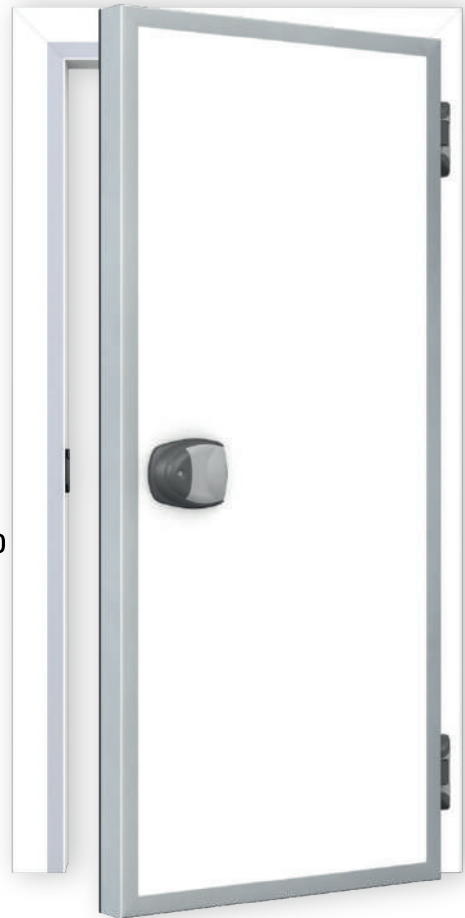
Counter frame/ inside of the cold rooms.

3- For negative temperature, a heating cable 30 w/m powered at 220

V is inserted inside the frame covered by an aluminum profile.

4- A special opening for rail passage Inside meat processing plants:

- The opening size will be 200 x 400 mm or customized.
- The opening will be surrounded by the P.V.C.
- Two rubber seals will be fixed on the opening to let pass the Guideway.

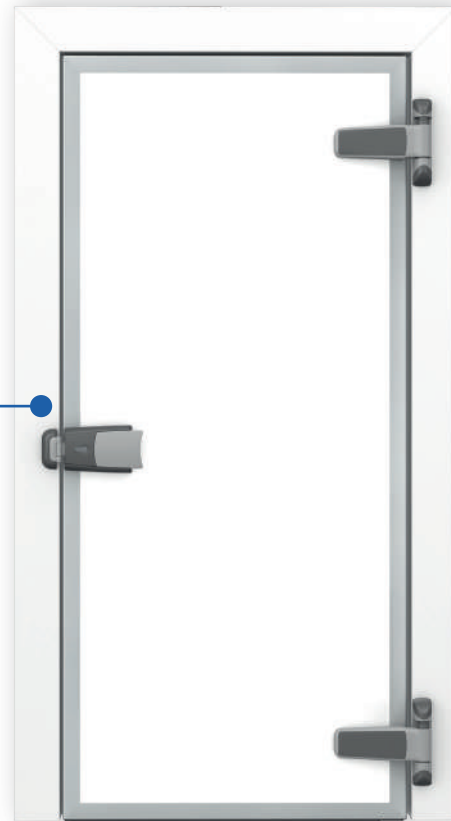


# Hinged Door

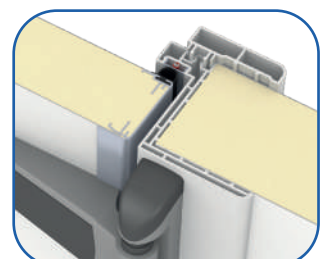
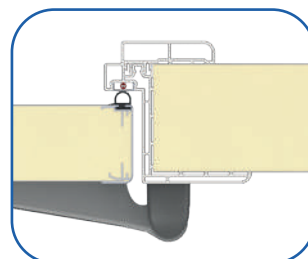
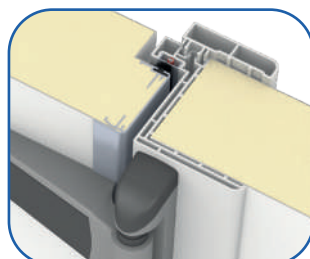
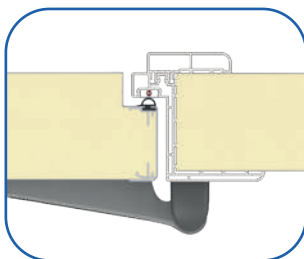
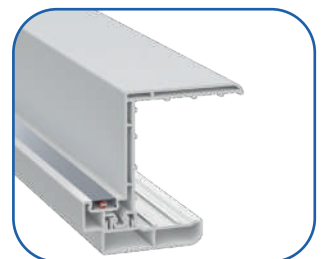
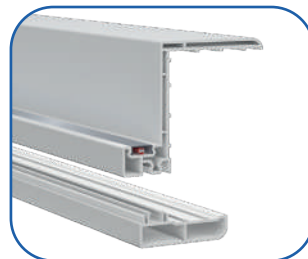
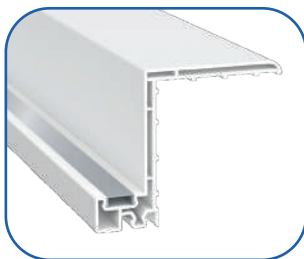
## Flush Doors

1- Extruded P.V.C profile Z shape ending with a square box to install the heating cable covered with extruded aluminum, installed on 100 mm panel thickness, reinforced internally by steel.

2- A heating cable 20 w/m powered at 220 V is inserted inside the frame negative temperature.



Flush Door



# Hinged Door

## 4-Hinged System

### Overlap Doors

According to the application and type of the door we use high-quality Italian hinged hardware, all models are CE certified and tested up to 10,000 times.

The hinged system consists of the following parts:

1-External fastener with key lock and emergency safety release.

2-Hinges

#### Hinged system technical data:

- No door Clearance encumbrance.
- Interchangeable right or left.
- Inside emergency safety release push-button.
- Adjustments: horizontal/dual vertical adjustment.
- Recessed auto-lubricating ramp.





# Hinged Door

## Flush Doors

According to the application and type of the door we use high-quality Italian hinged hardware, all models are CE certified and tested up to 10,000 times.

The hinged system consists of the following parts:

1-External fastener with key lock and emergency safety release.

2-Hinges

**Hinged system technical data:**

- No door Clearance encumbrance.
- Interchangeable right or left.
- Inside emergency safety release push-button.
- Adjustments: horizontal/dual vertical adjustment.
- Recessed auto-lubricating ramp.



# Hinged Door

## Overlap Models



Model	Leaf Thickness	Temperature	Threshold	Rail passage
H70-TN	70 mm	+5	S1/S2/S4	–
H100-TN	100 mm	+2	S1/S2/S4	--
H70-TNG	70 mm	+5	S1/S2/S4	Yes
H100-TNG	100 mm	+2	S1/S2/S4	Yes
H100-BT	100 mm	-18	S3/S4	--
H120-BT	120 mm	-30	S3/S4	--
H150-BT	150 mm	-40	S3/S4	--
HD-70TN	70 mm	+5	S1/S2/S4	–
HD-70TNG	70 mm	+5	S1/S2/S4	Yes
HD-100TN	100 mm	+2	S1/S2/S4	–
HD-100TNG	100 mm	+2	S1/S2/S4	Yes

# Hinged Door

## Flush Models



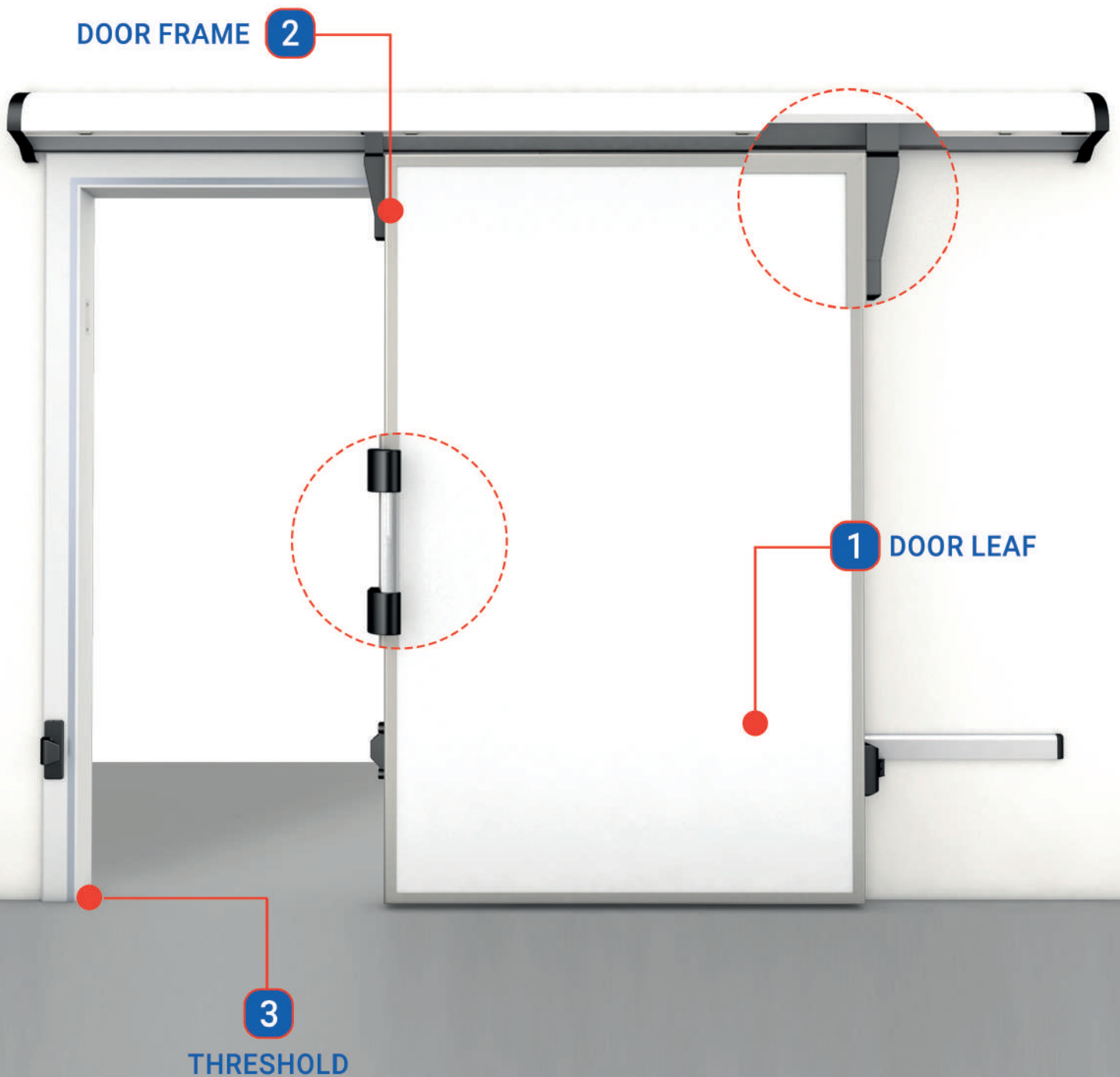
Model	Leaf Thickness	Temperature	Threshold
HF70-TN	70 mm	+5	S1/S2/S4
HF100-TN	100 mm	+2	S1/S2/S4
HF100-BT	100 mm	-18	S1/S2/S3/S4
HFD70-TN	70 mm	+5	S1/S2/S4
HFD100-TN	100 mm	+2	S1/S2/S4
HFD100-BT	100 mm	-18	S1/S2/S3/S4

# ISO-THERMAL INSULATED DOORS

## SLIDING DOORS



# LIGHT SLIDING DOORS





# Light Sliding Door

## Modular dimensions

- WIDTH up to 1400 mm for single-leaf door.
- HEIGHT up to 2200 mm for both single and double leaf door.
- Thickness 70 mm and 100 mm.



## 1- Doors Leaf

- Cladding both sides of two pre-painted hot dip-galvanized steel sheets thickness 0.50mm RAL 9002 (Standard), thicker sheets available (on request) surrounded by an anodized aluminum profile 70 mm, Injected with Polyurethane rigid foam (PUR) density of 40 Kg/ m3 ( $\pm 2$  kg).
- Along the edge of the anodized aluminum profile insert a special EPDM rubber gasket double density.
- Special 3 lines EPDM rubber gaskets fixed at the bottom of the door leaf.

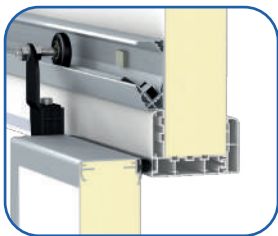
# Light Sliding Door

## 2- Door Frame

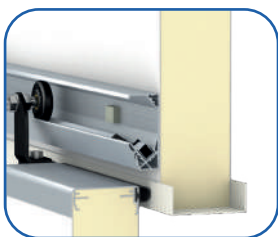
- Upper rail in Anodized aluminum supplied in detached pieces to allow fixing the falling ramps with the possibility of setting up the right or left opening.
- Wall Guide in anodized aluminum.
- Brackets in reinforced composite material and zinc-coated metal.
- Two pulleys made of composite plastic materials.
- Fixed external handle in composite plastic material with stainless steel 304 tube.
- Fixed deep internal handle in luminescent plastic material.
- Adjustable lower register.
- Vertical and horizontal door leaf adjustment

## Optional

- 1-Lock with key and safety release



Frame 100mm



Frameless

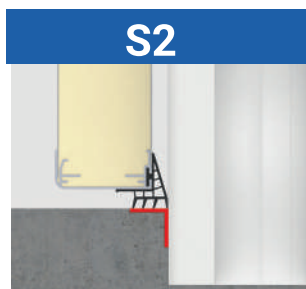


## 3-Threshold

Three types of thresholds are available depending on door application and temperature of the room.



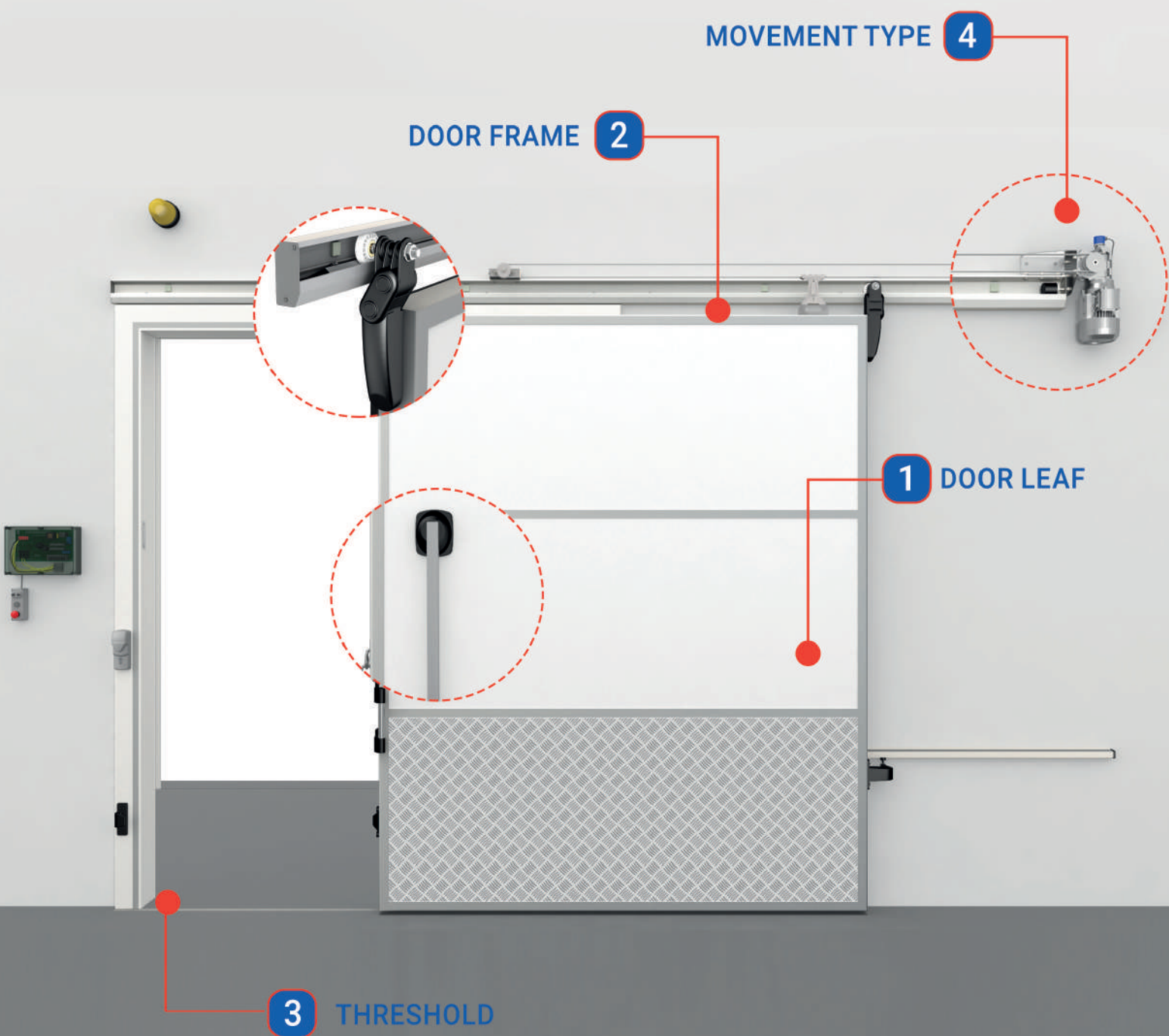
without threshold, the frame is only 3 parts (2 jambs + 1 transom) for positive temperature for rooms with or without floor.



frame is only 3 parts and a special 40x40 mm thickness 4mm pre-painted steel angle is connected to the frame at the bottom and recessed into the concrete floor at 80mm, used for both positive for rooms without a floor.

# INDUSTRIAL SLIDING DOORS

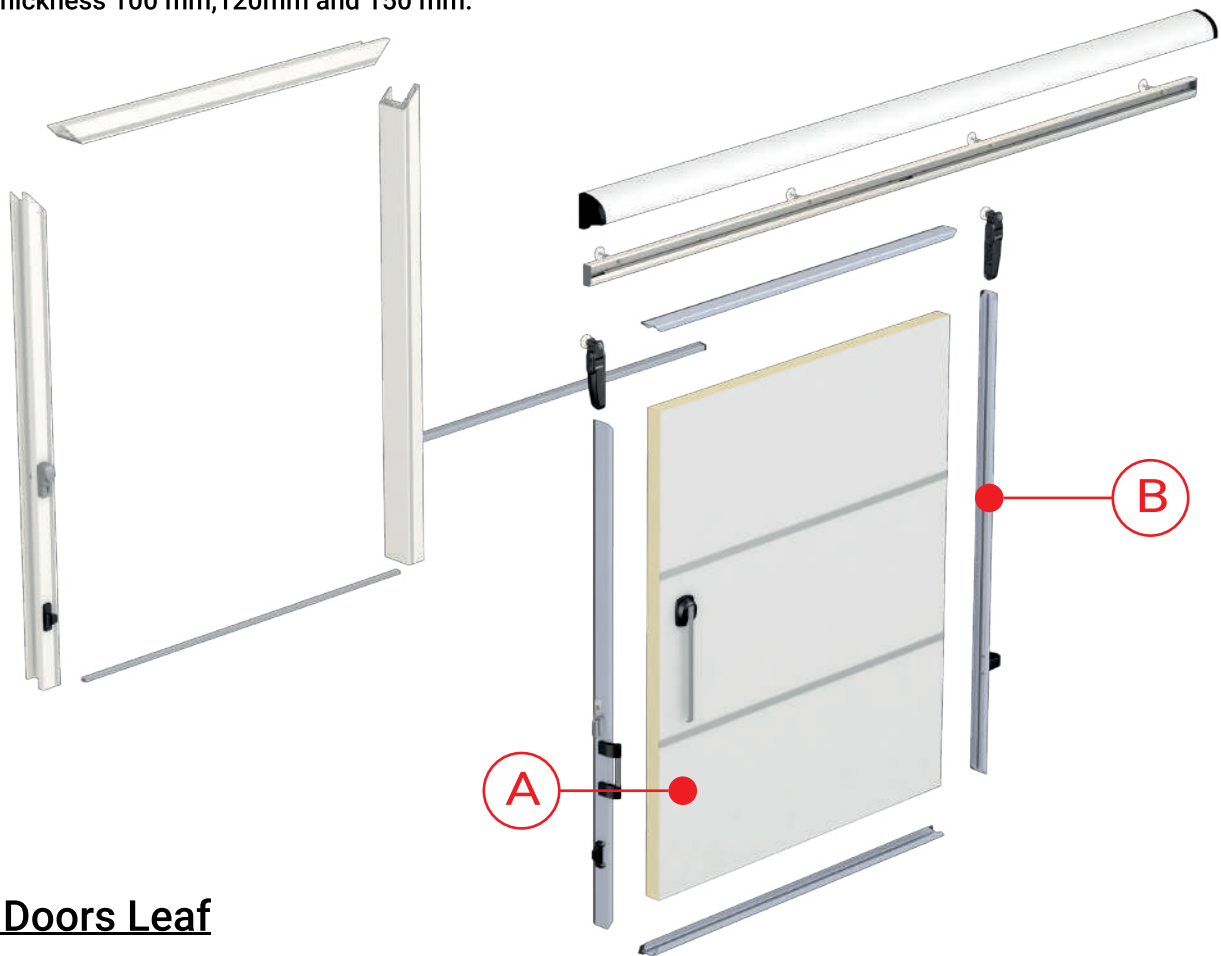
## single & double leaves



# Industrial Sliding Door

## Modular dimensions

- WIDTH up to 3400 mm for single-leaf door.
- WIDTH up to 6800 mm for double leaves door.
- HEIGHT up to 4300 mm for both single and double leaf door.
- Thickness 100 mm, 120mm and 150 mm.



## 1- Doors Leaf

- A- Cladding both sides of two pre-painted hot dip-galvanized steel sheets thickness 0.50mm RAL 9002 (Standard), thicker sheets available (on request) surrounded by an anodized aluminum profile 100,120 and 150mm, Injected with Polyurethane rigid foam (PUR) density of 40 Kg/ m<sup>3</sup> (±2 kg).
- B- Along the edge of the anodized aluminum profile insert a special EPDM rubber gasket double density, in deep freezers up to - 40 degrees insert two double-density gaskets, Special 3 lines EPDM rubber gasket is fixed at the bottom.
- Leaf is reinforced internally with a metal tube connecting four sides of anodized aluminum in perfect shape and condition.
  - Along the anodized aluminum internally special metal plates are inserted to allow fixing sliding system parts.



# Industrial Sliding Door

## 2- Door Frame

A- Frame is made up of extruded P.V.C profiles reinforced internally by steel and it is thermo-welded at (45o) and delivered in 3 main parts:

- Outside part/ fixed size - 2 types - one for positive and the other for negative temperature.
- Side part/ in two sizes 30 ,20, and 100 mm to be connected to the outside part in order to reach the right panel thickness.
- Counter frame/ inside of the cold rooms.

B- Optional/ framed can be covered by welded stainless steel 304 along with a door leaf made on both sides from stainless steel.

C- For negative temperature, a heating cable 30 w/m powered at 220v is inserted inside the frame covered by an aluminum profile.

D- For deep freezers, up to 40-co heating cable 30 w/m powered at 220v is inserted in both leaf and frame.

E- For meat processing plants a special opening for rail is done as follows:

- The opening size will be 200 x 400 mm or as the customer requests.
- The opening will be surrounded by the P.V.C counter frame.
- Two rubber seals will be fixed on the opening to let pass the Guideway.



## Optional

1- Higher door up 6000 mm

2- lock with key and safety release

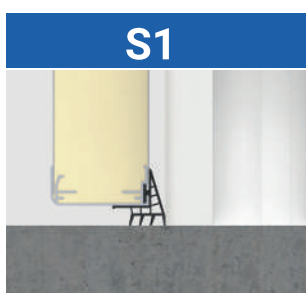
3- Automatic Sliding system SA100

- Electronic control unit power supply 265/90V Single-phase.
- Full control with magnetic encoder.
- Obstacle detection in closing, with adjustable drive-torque.
- Electric gear motor 380/220V50-Hz with magnetic encoder.
- External push button switch box.
- Emergency stop switch.
- External flashing light.
- Degree of protection: IP55

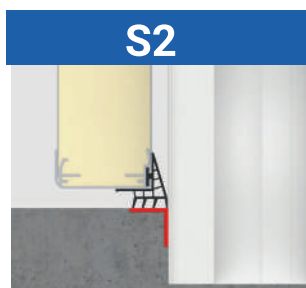
# Industrial Sliding Door

## 3-Threshold

Three types of thresholds are available depending on door application and temperature of the room.



frame is only 3 parts without a threshold connected to it for positive and negative temperature.



frame is only 3 parts and a 50x50 mm pre-painted steel angle is connected to the frame at the bottom and recessed into the concrete floor.



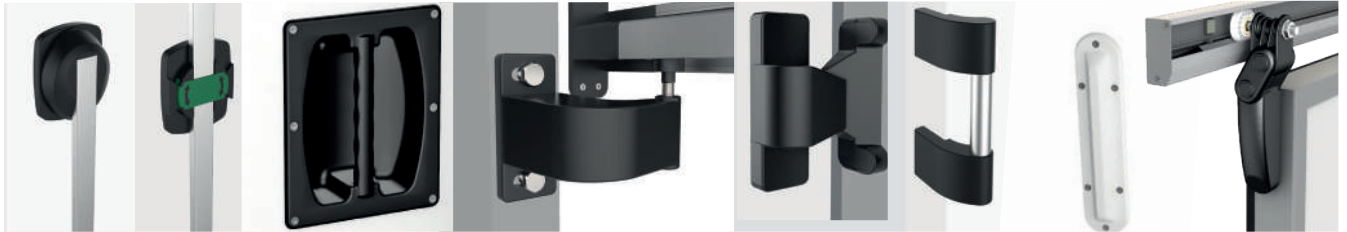
frame is only 3 parts, A metal tube Angle of 40 x 40 mm joined with another stainless-steel tube (20 x 40 mm) Both are connected to the frame at the bottom and recessed into the concrete floor.

A heating cable 20 or 30 w/m powered at 220 V. is inserted inside the upper stainless-steel tube which remains visible at the same floor level only for negative temperature.

# Industrial Sliding Door

## Sliding System

### A- Manual Movement



### Optional

- Lock
- SS kick Plate
- AL Kick Plate



### B- Automatic Movement

- **Control Panel**  
power  
90/265 Vac 50-60 Hz
- **Three-Phase Gear Motor**  
power  
220/380V-50Hz 550 Watt
- **Magnetic Encoder**  
Resolution 2048  
pulses/revolution - IP64
- **Degree of Protection**  
IP55



### Model for single leaf

Model	Leaf Thickness	Temperature	Threshold	Rail passage
SI-100TN	100 mm	+2	S1/S2	-
SI-100BT	100 mm	-18	S3	-
SI-120BT	120 mm	-30	S3	-
SI-150BT	150 mm	-40	S3	-
SI-100TNG	100 mm	+2	S1/S2	Yes

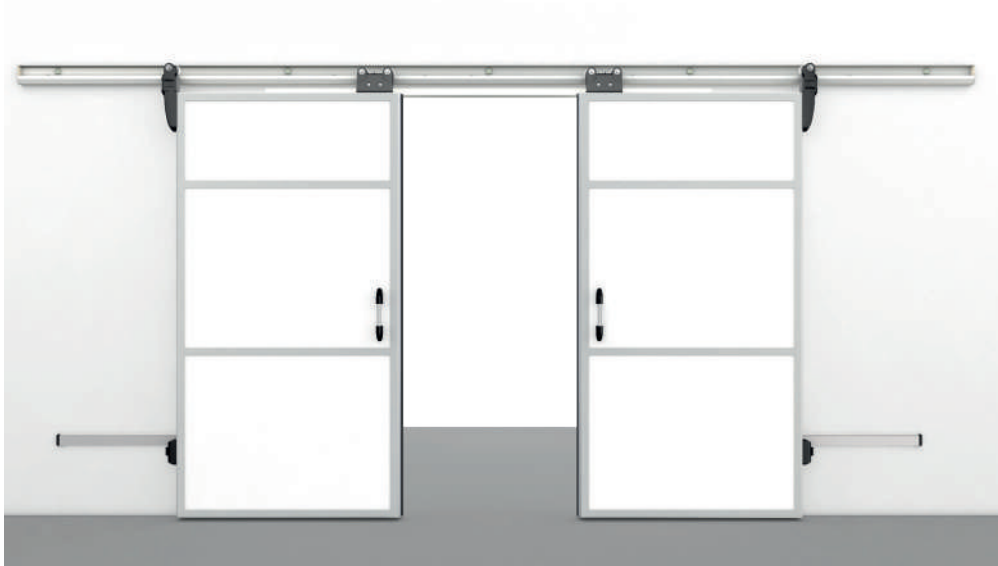
# Industrial Sliding Door

## 4- Movement Type for double leaves

### A-Manual (Independent opening of each leaf)

- Upper rail in Anodized aluminum supplied in detached pieces to allow fixing the falling ramps with the possibility of setting up the right or left opening.
- Adjustable patented brackets "FSS" (Flex System Support) in reinforced composite material, suitable for doors with different counter-frame thicknesses and without counter-frame.
- Wall Guide in anodized aluminum.
- Brackets in reinforced composite material and zinc-coated metal.
- Two pulleys made of composite plastic materials.
- Fixed external handle in composite plastic material with stainless steel 304 tube.
- Fixed deep internal handle in luminescent plastic material.
- Vertical and horizontal door leaf adjustment.

### Model for double leaves



Model	Leaf Thickness	Temperature	Threshold
SD-100TN	100 mm	+5	S1/S2
SD-100BT	100 mm	-18	S3
SD-120BT	120 mm	-30	S3
SD-150BT	150 mm	-40	S3

# Industrial Sliding Door

## B-Mechanical Movement (simultaneous opening of both leaves)

- Belt pensioner tooth bracket.
- Rubber drive belt.
- Connection bracket door/belt

## Model for double leaves



Model	Leaf Thickness	Temperature	Threshold
SD-100TNC	100 mm	+2	S1/S2
SD-100BTC	100 mm	-18	S3
SD-120BTC	120 mm	-30	S3
SD-150BTC	150 mm	-40	S3



# Industrial Sliding Door



## C-Automatic Movement (simultaneous opening of both leaves)

- Electronic control unit power supply 265/90V Single-phase.
- Full control with magnetic encoder.
- Obstacle detection in closing, with adjustable drive-torque.
- Adjustable opening and closing speed.
- Re-close pause timer adjustable from 1 to 60 seconds.
- Optional temperature controller and heater (for low temperature).
- Electric gear motor 380/220V50-Hz with magnetic encoder, supplied with assembling Kit.
- Belt pensioner tooth bracket.
- Rubber drive belt.
- Connection bracket door/belt.
- External flashing light.
- Control panel: Power 265/90 Vac 60-50 Hz.
- Three-phase gear motor: Power 380/220V50-Hz 550 Watt.
- Magnetic encoder: Resolution 2048 pulses/revolution - IP64.
- Degree of protection: IP55

# SEMI-INSULATED SERVICE DOORS

## SWING DOORS



# SWING DOORS

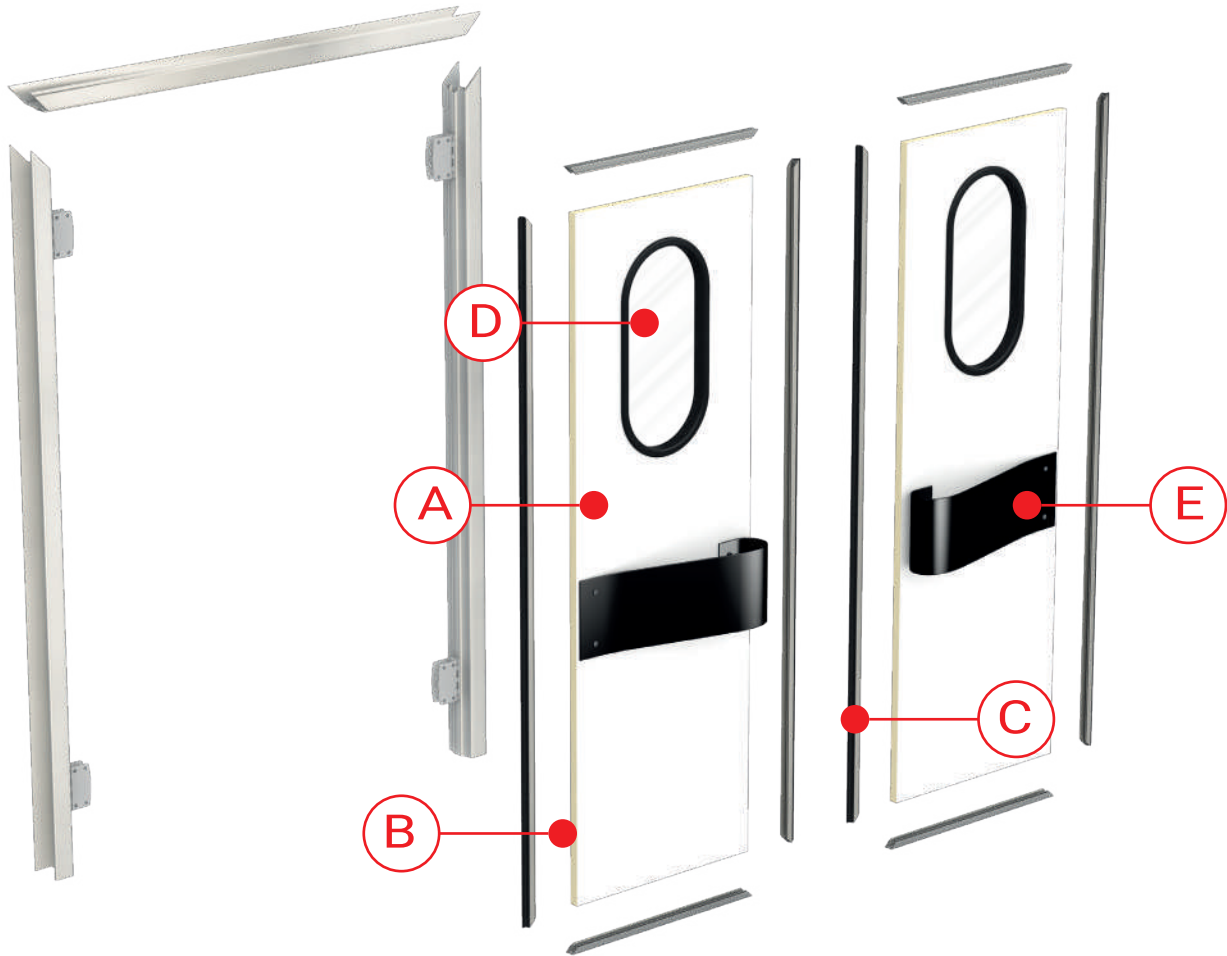
## single & double leaves



# Swing Door

## Modular dimensions

- WIDTH up to 1200 mm for single-leaf door.
- WIDTH up to 2400 mm for double-leaf door.
- HEIGHT up to 2500 mm for both single and double leaf door.
- Thickness 40 mm.



## 1-Door Leaf

- A- Cladding pre-painted hot dip-galvanized steel sheets thickness 0.50mm RAL 9002 (Standard), surrounded by anodized aluminum profile thickness 40mm.
- B- Injected with Polyurethane rigid foam (PUR) density 40 Kg/ m3 ( $\pm 2$  kg).
- C- Along the two jambs of the leaf insert a special EPDM rubber gasket.
- D- Oval Sight vision 300 x 700mm made of 5 mm polycarbonate sheet surrounded by a special rubber gasket.
- E- Polycarbonate thickness 4mm pumper fixed on both sides of the leaf.



# Swing Door

## 2-Door Frame

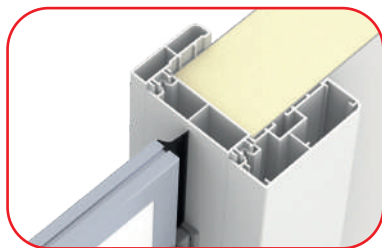
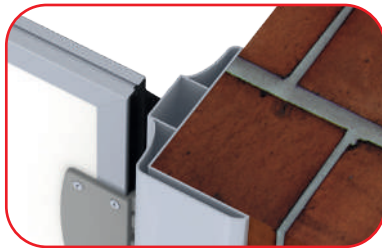
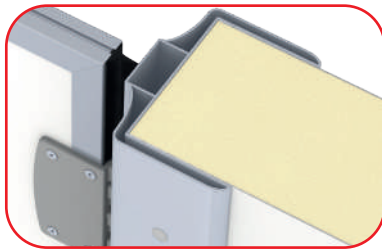
Two types of frames are used with swing doors

1-Extruded PVC profiles reinforced internally by steel, thermo-welded at (45o) delivered in 3 main parts.

2-Extruded Anodized Aluminum profiles.

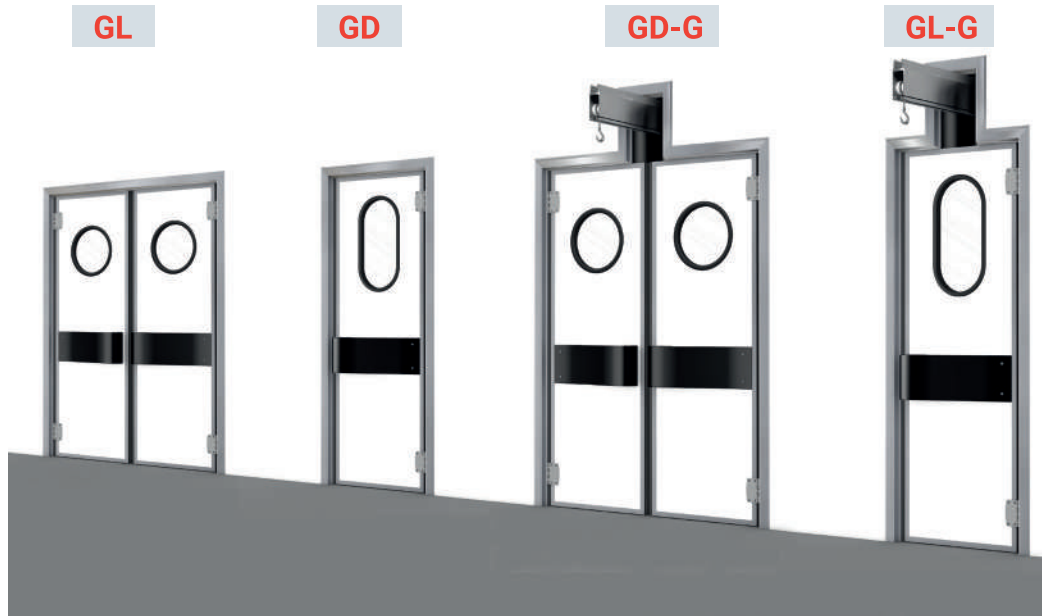
Inside meat processing plants with rail passages for meat a special opening for rail is done as follows:

- The opening size will be 200x 400 mm or as the customer requests.
- The opening will be surrounded by the P.V.C or aluminum frame.
- Two rubber seals will be fixed on the opening to let pass the Guideway.



# Swing Door

## Swing Doors Models



Model	Leaf Thickness	Temperature	Threshold	Rail passage	Single&Double
GL	40 mm	+12	S1	No	Single
GL-G	40 mm	+12	S1	Yes	Single
GD	40 mm	+12	S1	No	Double
GD-G	40 mm	+12	S1	Yes	Double

## Optional



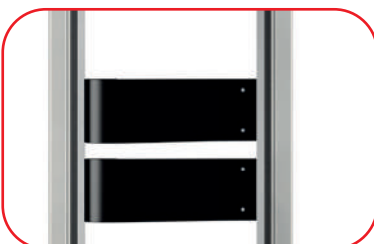
Rounded sight vision 350 x 350 mm



stainless steel pumper



stainless steel pumper



double pumper



350 mm stainless steel sheet protection.



Rail passages for meat

# SEMI-INSULATED SERVICE DOORS

## OFFICE DOORS





# OFFICE DOORS

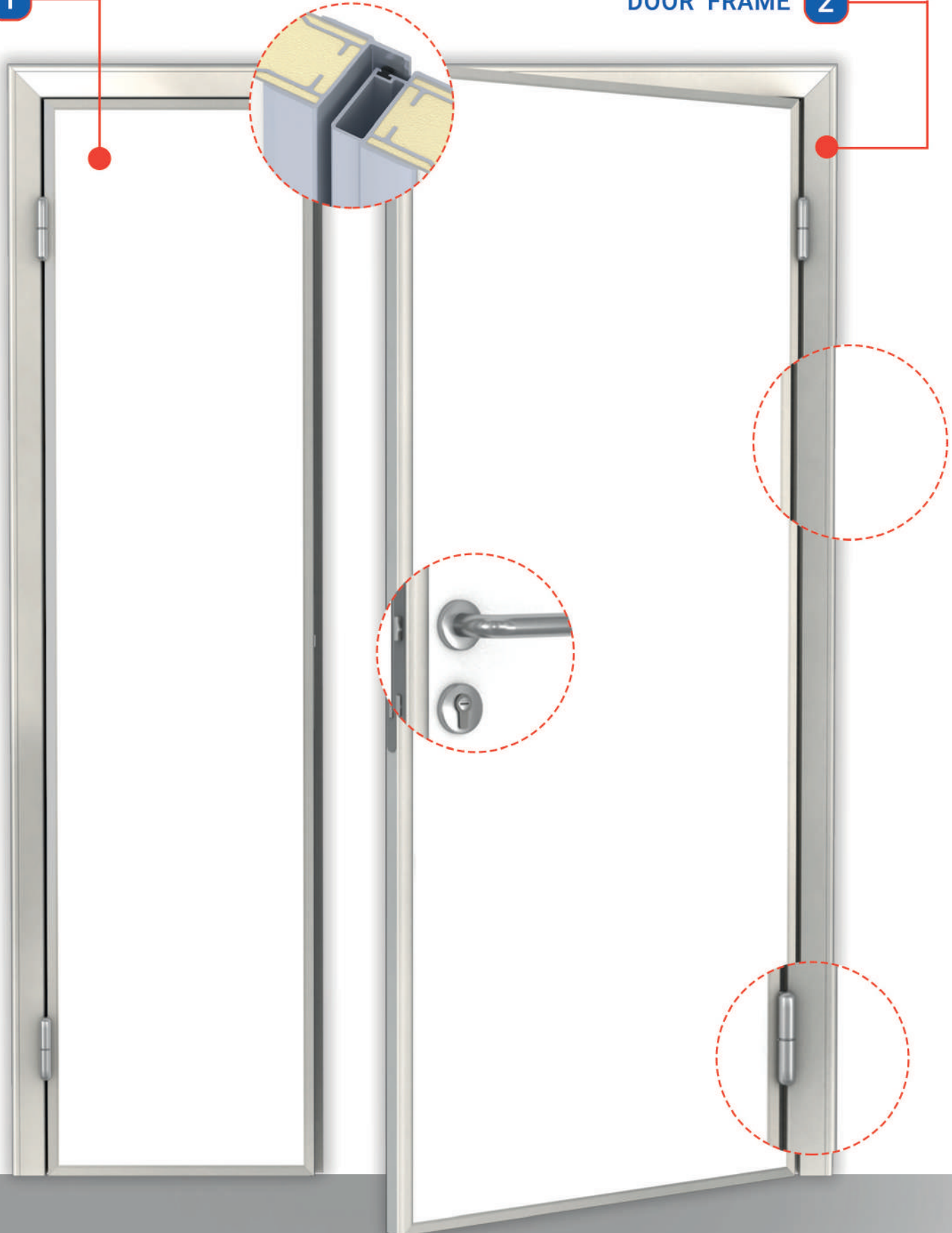
## single & double leaves

DOOR  
LEAF

1

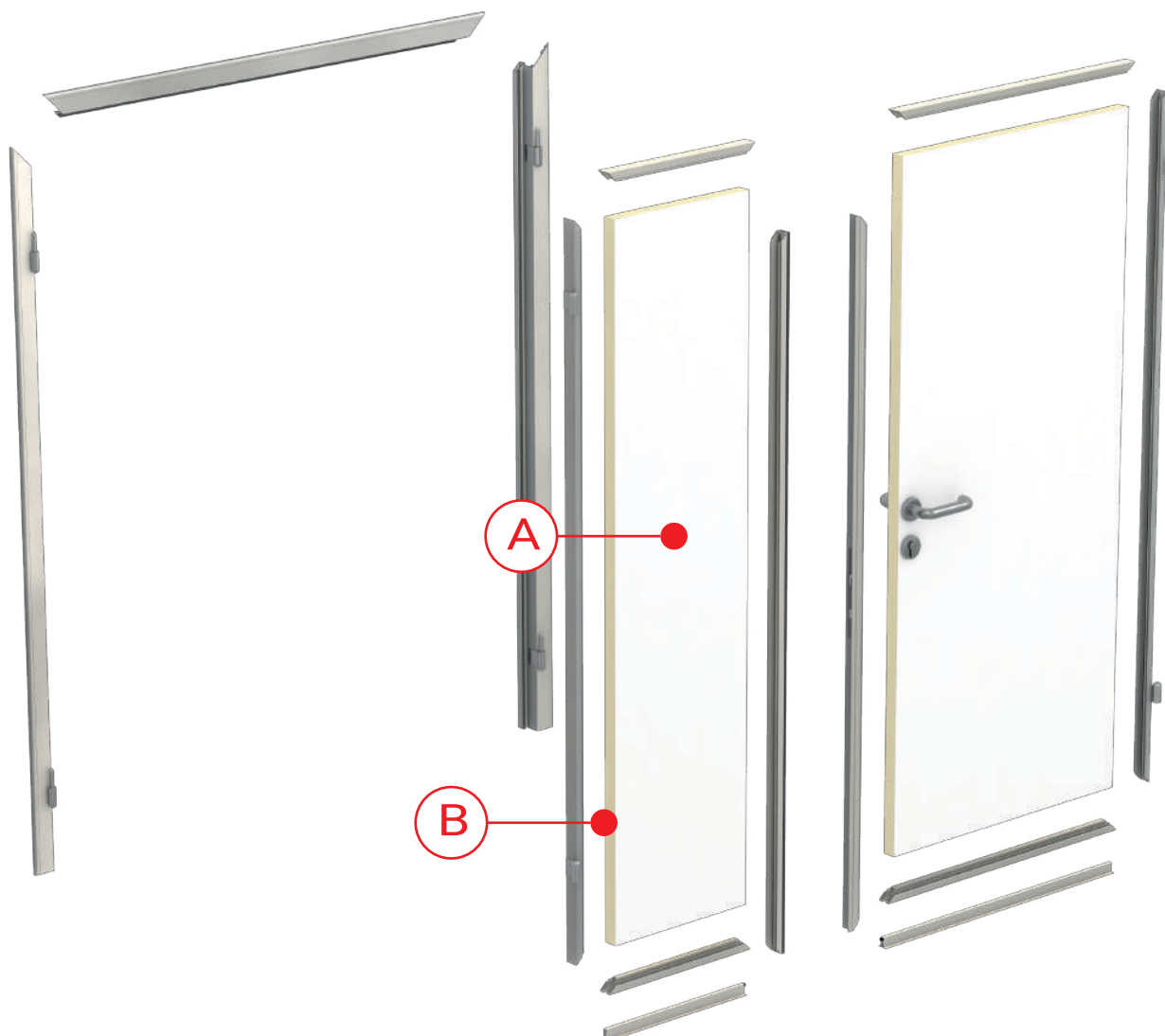
DOOR FRAME

2



## Modular dimensions

- WIDTH up to 1200 mm for single-leaf door.
- WIDTH up to 2400 mm for double-leaf door.
- HEIGHT up to 2500 mm for both single and double leaf door.
- Thickness 40 mm.



## 1-Door Leaf

A- Cladding pre-painted hot dip-galvanized steel sheets thickness 0.50mm  
RAL 9002 (Standard), surrounded by anodized aluminum profile  
thickness 40mm.

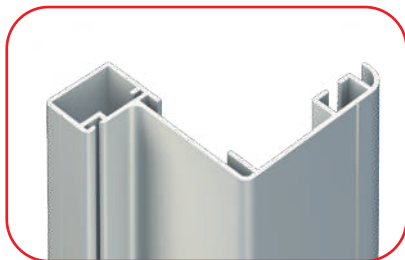
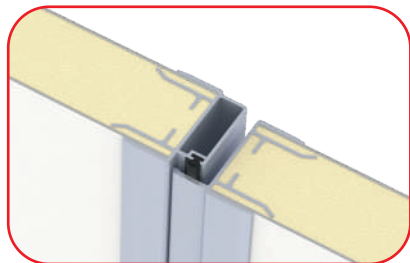
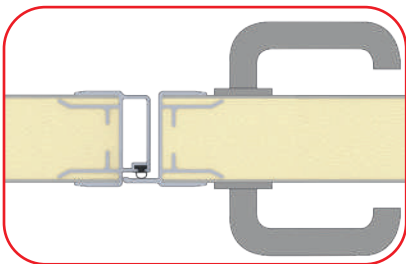
B- Injected with Polyurethane rigid foam (PUR) density 40 Kg/ m<sup>3</sup> (±2 kg).

## 2-Door Frame

The frame is made up of Extruded Anodized Aluminum profiles fixed on brick wall L shapes or sandwich panels thicknesses up to 150 mm.

1-Outside (Z) shape with invisible fastening along the two jambs.

2-Inside (L) mirrored with the outside with invisible fastening.



# Office Door

## Office Doors Models

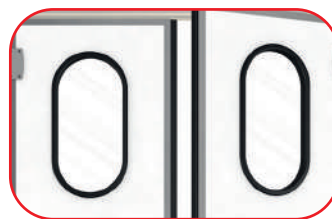


Model	Leaf Thickness	Temperature	Threshold	No.of leaves
CL	40 mm	+12	S1	Single
CD	40 mm	+12	S1	Double

## Optional



Protection at the bottom of the leaf  
(interior & exterior)



Oval Sight vision 300 x 700mm made of  
4 mm polycarbonate sheet surrounded  
by a special rubber gasket allows fixing  
into the leaf



Rounded sight vision 350 x 350 mm



Stainless steel cladding 304 or 316

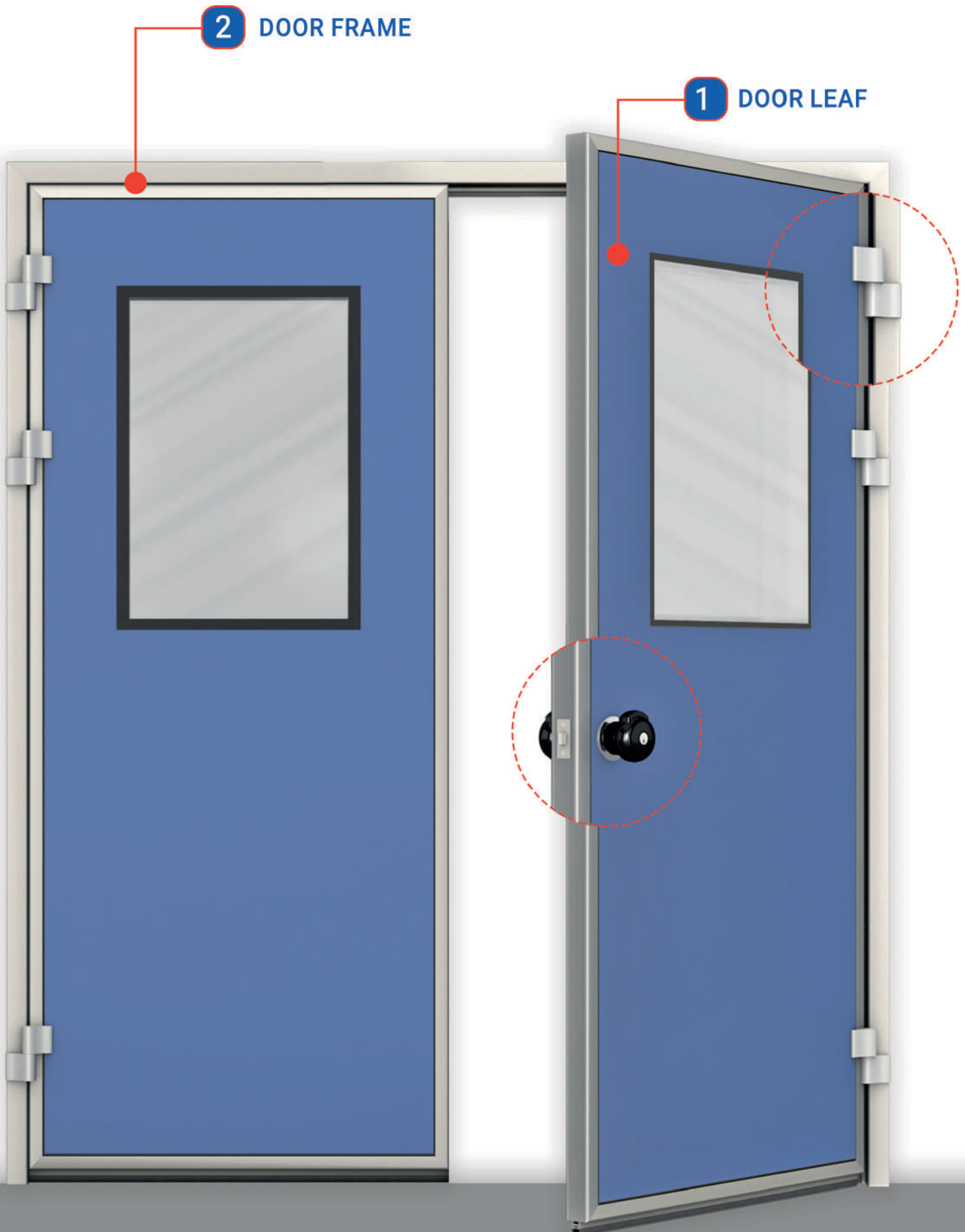


Automatic door closer

# CLEAN ROOM DOORS



# CLEAN ROOM DOORS



# Clean Room Door

Designed to comply with the special requirements established by GPM guidelines for sterile environments.

## Advantages and Characteristics

- Non-corrosive and non-flammable materials  
Chemical resistance.
- Easy to clean.
- Flush door with 50 mm clean room panels.
- Can be fixed on cleanroom partitions, Sandwich panels, and Brick walls.
- Long life expectancy

## Modular dimensions

- WIDTH up to 1200 mm for single-leaf door
- WIDTH up to 2400 mm for double leaves door
- FIXED leaf size not less than 400 mm.
- HEIGHT up to 3000 mm
- THICKNESS 50 mm

## Optional accessories:



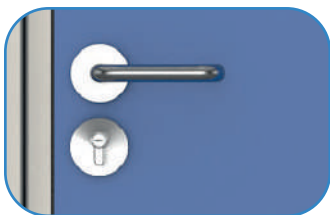
Stainless steel 304 or 2 316B for both internal and external leaf cladding



Panic handle



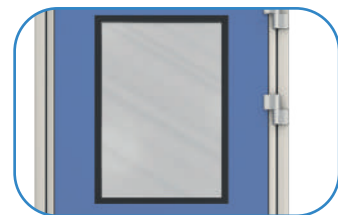
Automatic or manual door closer



Stainless steel handles with key lock



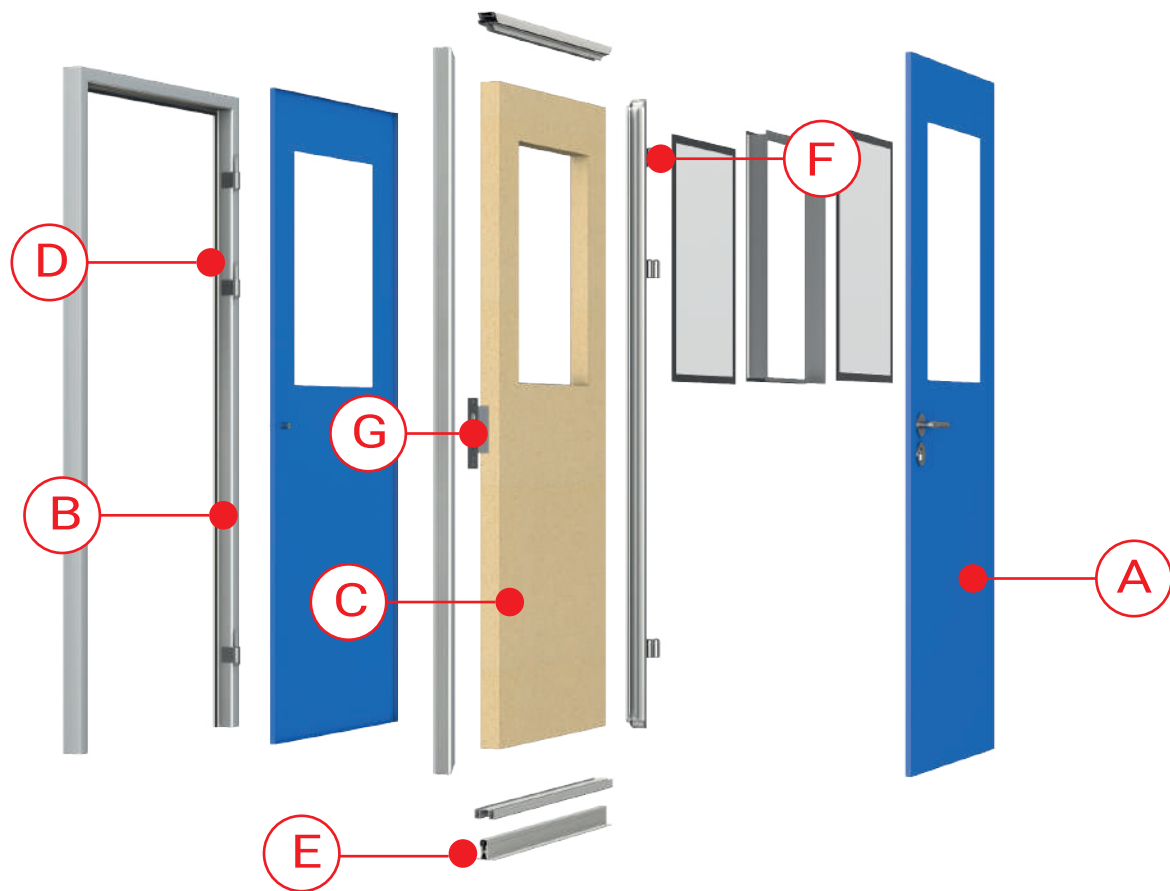
Interlocking system



Glass window 400 x 600 mm thickness 50 mm injected with hydrogen gas for thermal break.



# Clean Room Door



## 1-Door Leaf

A-Both sides are made up of pre-painted hot dip-galvanized steel sheets thickness 0.50 mm RAL 9002 (Standard).

B-Surrounded by a high anodized aluminum profile thickness 50 mm.

C-Injected with Polyurethane rigid foam (PUR) density 40 Kg/ m<sup>3</sup> (±2 kg) or rock wall 100 kg/m<sup>3</sup>.

D-Inserted in both columns and the ransom special EPDM rubber gasket for perfect sealing.

E- Drop seal at the bottom of the leaf.

F- Aluminum flush hinge.

G-Aluminum knob or handle with key lock.

## 2-Door Frame

- An anodized profile thickness 50 mm can be fixed on 50 mm panels or brick walls.

# RAL COLORS

**RAL 9002**  
standard color

grey white

**RAL 9006**  
white aluminum

**RAL 9010**  
white

**RAL 5010**  
gentian blue

**RAL 5012**  
light blue

**RAL 6032**  
signal green

**RAL 1021**  
colza yellow

**RAL 1014**  
ivory

**RAL 3000**  
flame red

**RAL 2004**  
pure orange

